

# Report on the Open Cod Competition 2025

Written for our sponsors - details the day and results.

CBYC angling section would like to thank you for your **generous and exceedingly kind sponsorship** of the 48<sup>th</sup> staging of the CBYC Open Cod Competition, *believed to be one of the UK's largest boat angling competitions.*





Charter Boats



Storm Lee



Tunnara



Sea Leopard



WhiteWater 2



Lady Jen



Escape







**CARDIFF BAY YACHT CLUB**  
**48TH ANNUAL COD COMPETITION 2025**

	Boat Name	Angler's Name	Weight (kg)
1st	Prowler	Dale Carvana	6.225
2nd	Catch My Drift	Jack Beecher	4.525
3rd	Pembroke Exp	Oxo	4.250
4th	Hari Buoy	Mike Farquhar	3.075
5th	Hunters Moon	Gary Addis	2.175
6th	Aftica	Alex Pearce	1.850
7th	Pembroke Explo	Rhys Phillips	1.525
8th			
9th			
10th			
11th			
12th			
13th			
14th			
15th			
16th			
17th			
18th			
19th			
20th			









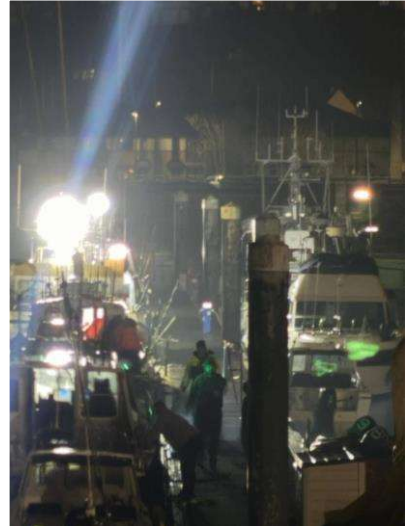
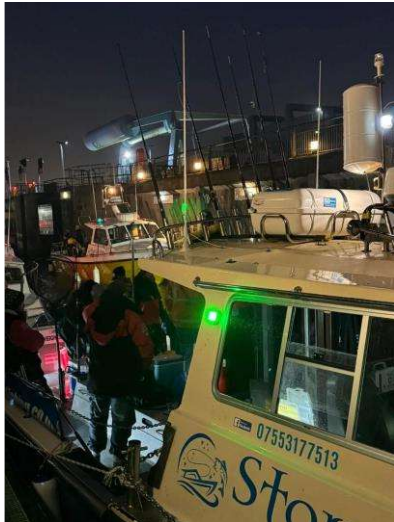





Your sponsorship helped to ensure we attracted a big field of anglers in our 48<sup>th</sup> year of staging the competition. We actively promoted your business through social media and footfall over the days leading up to the competition held on the Sunday 18th January 2026. The original date of 23<sup>rd</sup> of November 2025, had to be postponed due to high winds of 40mph+ on the day. We hope the images and write up on the day gives you some insight into this year's competition.

We attracted over **247 anglers on 68 boats** this year.

### Some Pictures of the day







We managed to get the competition away on the backup date. Weather for the day was forecast with light winds but with drizzle for most of the day. Conditions remained calm all day and provided for boats to fish a wide area of the Bristol Channel in search of the prize-winning cod.



At the evening's presentation, 7 anglers were recognised for bringing cod over >1.5kg to the scales with only 11 cod caught on the day. Four cod were weighed-in, but unfortunately didn't make the min, 1.5kg. The cod season seems to be changing at an alarming rate, and we will need to review how we get the competition to its 50<sup>th</sup> year and then probably retire this competition in favour of our newly launched Open Summer Competition.

The winning fish was caught by **Dale Carvana** on boat **Prowler**, a local angler, with a fish of 6.225kg (13.7lbs). Dale won £1000 cash prize, a top end **Lowrance Eagle 9"** chart plotter, top of the range **Fenix head torch**, a book by Terry Theobald - 'Forever Hooked' and the cash pool of £1,090.



**Dale Carvana – 1<sup>st</sup> place**



In second place by local angler **Jack Beecher** on **Catch My Drift** who landed a cod of 4.525kg (10lbs). Jack won £300 cash and a **Lowrance 7" Eagle** plotter and a **Fenix** head torch.

**Umer Chohan** brought a fish to the scales which weighed 4.25kg (9.4lbs) on his boat **Pembroke Explorer**, winning £200 and a **Lowrance Eagle 4x** sonar and a **Fenix** head torch.

**Jack Beecher – 2<sup>nd</sup> place**

**Umer Chohan - 3<sup>rd</sup> place**





We raised **£830** for the RNLI in the evening from a raffle for a tackle box, including various Daiwa tackle and clothing, including a Daiwa large fishing bag and a Daiwa reel, donated by the Angling Section and its members.



We sincerely hope all our efforts have provided valued support to your businesses and we could not stage this competition without your sponsorship. We have highly promoted the competition through lots of social media sites and the results roundups have had thousands of views.



Rob Cole, Angling Cymru Press Officer has authored a very nice report which can be found at [www.wfsapress.co.uk](http://www.wfsapress.co.uk)

**Thanks once again for your sponsoring this annual competition as we build towards our 50<sup>th</sup>.**

We also run a summer Open Competition which is growing with over 104 anglers and 36 boats participating last June. The next staging is set for the 13th of June 2026, and we have teamed up with Angling Cymru to stage a DragonMania Open Boat Competition out of Cardiff this summer. As always, we are looking for sponsorship, as this competition is catch and release competition targeting Smoothound, Blonde Rays and Congers we use measuring mats and photos with your company logo prominently displayed. If you wish to be involved, please contact a member of the Angling Section at CBYC to discuss options.

CBYC

# HONDA MARINE

CBYC

# HONDA MARINE

**TARDIS**  
FISH & CHUM

**FORCE 4**  
CHANDLER

**GARRY EVANS**  
FISH & CHUM

**CHANNEL MARINE**  
FISH & CHUM

**Bait 2 Go**  
FISH & CHUM

**FREEMANTLE**  
FISH & CHUM

**DAWA**  
FISH & CHUM

**W**  
FISH & CHUM

**W**  
FISH & CHUM

**W**  
FISH & CHUM

**W**  
FISH & CHUM

**W**  
FISH & CHUM

**W**  
FISH & CHUM

## CARDIFF BAY YACHT CLUB

### 2nd ANNUAL SUMMER OPEN COMPETITION 2025

Boat Name	Species	Weight (kg)	Length (cm)	Boat Name	Species	Weight (kg)	Length (cm)
1. TARDIS	Sea Bream	1.2	15.5	1. TARDIS	Sea Bream	1.2	15.5
2. FORCE 4	Sea Bream	1.1	15.0	2. FORCE 4	Sea Bream	1.1	15.0
3. GARRY EVANS	Sea Bream	1.0	14.5	3. GARRY EVANS	Sea Bream	1.0	14.5
4. CHANNEL MARINE	Sea Bream	0.9	14.0	4. CHANNEL MARINE	Sea Bream	0.9	14.0
5. Bait 2 Go	Sea Bream	0.8	13.5	5. Bait 2 Go	Sea Bream	0.8	13.5
6. FREEMANTLE	Sea Bream	0.7	13.0	6. FREEMANTLE	Sea Bream	0.7	13.0
7. DAWA	Sea Bream	0.6	12.5	7. DAWA	Sea Bream	0.6	12.5
8. W	Sea Bream	0.5	12.0	8. W	Sea Bream	0.5	12.0
9. W	Sea Bream	0.4	11.5	9. W	Sea Bream	0.4	11.5
10. W	Sea Bream	0.3	11.0	10. W	Sea Bream	0.3	11.0
11. W	Sea Bream	0.2	10.5	11. W	Sea Bream	0.2	10.5
12. W	Sea Bream	0.1	10.0	12. W	Sea Bream	0.1	10.0
13. W	Sea Bream	0.0	9.5	13. W	Sea Bream	0.0	9.5
14. W	Sea Bream	0.0	9.0	14. W	Sea Bream	0.0	9.0
15. W	Sea Bream	0.0	8.5	15. W	Sea Bream	0.0	8.5
16. W	Sea Bream	0.0	8.0	16. W	Sea Bream	0.0	8.0
17. W	Sea Bream	0.0	7.5	17. W	Sea Bream	0.0	7.5
18. W	Sea Bream	0.0	7.0	18. W	Sea Bream	0.0	7.0
19. W	Sea Bream	0.0	6.5	19. W	Sea Bream	0.0	6.5
20. W	Sea Bream	0.0	6.0	20. W	Sea Bream	0.0	6.0
21. W	Sea Bream	0.0	5.5	21. W	Sea Bream	0.0	5.5
22. W	Sea Bream	0.0	5.0	22. W	Sea Bream	0.0	5.0
23. W	Sea Bream	0.0	4.5	23. W	Sea Bream	0.0	4.5
24. W	Sea Bream	0.0	4.0	24. W	Sea Bream	0.0	4.0
25. W	Sea Bream	0.0	3.5	25. W	Sea Bream	0.0	3.5
26. W	Sea Bream	0.0	3.0	26. W	Sea Bream	0.0	3.0
27. W	Sea Bream	0.0	2.5	27. W	Sea Bream	0.0	2.5
28. W	Sea Bream	0.0	2.0	28. W	Sea Bream	0.0	2.0
29. W	Sea Bream	0.0	1.5	29. W	Sea Bream	0.0	1.5
30. W	Sea Bream	0.0	1.0	30. W	Sea Bream	0.0	1.0
31. W	Sea Bream	0.0	0.5	31. W	Sea Bream	0.0	0.5
32. W	Sea Bream	0.0	0.0	32. W	Sea Bream	0.0	0.0
33. W	Sea Bream	0.0	0.0	33. W	Sea Bream	0.0	0.0
34. W	Sea Bream	0.0	0.0	34. W	Sea Bream	0.0	0.0
35. W	Sea Bream	0.0	0.0	35. W	Sea Bream	0.0	0.0

**TARDIS**  
FISH & CHUM

**FORCE 4**  
CHANDLER

**GARRY EVANS**  
FISH & CHUM

**CHANNEL MARINE**  
FISH & CHUM

**Bait 2 Go**  
FISH & CHUM

**FREEMANTLE**  
FISH & CHUM

**DAWA**  
FISH & CHUM

**W**  
FISH & CHUM

**W**  
FISH & CHUM

**W**  
FISH & CHUM

**W**  
FISH & CHUM

**W**  
FISH & CHUM

**W**  
FISH & CHUM

### Spot Prices

Species	Length (cm)	Weight (kg)
Sea Bream	10.0	0.1
Sea Bream	11.0	0.2
Sea Bream	12.0	0.3
Sea Bream	13.0	0.4
Sea Bream	14.0	0.5
Sea Bream	15.0	0.6
Sea Bream	16.0	0.7
Sea Bream	17.0	0.8
Sea Bream	18.0	0.9
Sea Bream	19.0	1.0

### Species Price Length

Species	Length (cm)	Weight (kg)
Sea Bream	10.0	0.1
Sea Bream	11.0	0.2
Sea Bream	12.0	0.3
Sea Bream	13.0	0.4
Sea Bream	14.0	0.5
Sea Bream	15.0	0.6
Sea Bream	16.0	0.7
Sea Bream	17.0	0.8
Sea Bream	18.0	0.9
Sea Bream	19.0	1.0

### Species Price Length

Species	Length (cm)	Weight (kg)
Sea Bream	10.0	0.1
Sea Bream	11.0	0.2
Sea Bream	12.0	0.3
Sea Bream	13.0	0.4
Sea Bream	14.0	0.5
Sea Bream	15.0	0.6
Sea Bream	16.0	0.7
Sea Bream	17.0	0.8
Sea Bream	18.0	0.9
Sea Bream	19.0	1.0

### Species Price Length

Species	Length (cm)	Weight (kg)
Sea Bream	10.0	0.1
Sea Bream	11.0	0.2
Sea Bream	12.0	0.3
Sea Bream	13.0	0.4
Sea Bream	14.0	0.5
Sea Bream	15.0	0.6
Sea Bream	16.0	0.7
Sea Bream	17.0	0.8
Sea Bream	18.0	0.9
Sea Bream	19.0	1.0

### Species Price Length

Species	Length (cm)	Weight (kg)
Sea Bream	10.0	0.1
Sea Bream	11.0	0.2
Sea Bream	12.0	0.3
Sea Bream	13.0	0.4
Sea Bream	14.0	0.5
Sea Bream	15.0	0.6
Sea Bream	16.0	0.7
Sea Bream	17.0	0.8
Sea Bream	18.0	0.9
Sea Bream	19.0	1.0

### Species Price Length

Species	Length (cm)	Weight (kg)
Sea Bream	10.0	0.1
Sea Bream	11.0	0.2
Sea Bream	12.0	0.3
Sea Bream	13.0	0.4
Sea Bream	14.0	0.5
Sea Bream	15.0	0.6
Sea Bream	16.0	0.7
Sea Bream	17.0	0.8
Sea Bream	18.0	0.9
Sea Bream	19.0	1.0

### Species Price Length

Species	Length (cm)	Weight (kg)
Sea Bream	10.0	0.1
Sea Bream	11.0	0.2
Sea Bream	12.0	0.3
Sea Bream	13.0	0.4
Sea Bream	14.0	0.5
Sea Bream	15.0	0.6
Sea Bream	16.0	0.7
Sea Bream	17.0	0.8
Sea Bream	18.0	0.9
Sea Bream	19.0	1.0

CBYC

British Heart  
Foundation



Tight lines

Harvey Preston

On behalf of CBYC Angling Section