



NOTICE TO MARINERS NO. 9/25

Chart BA 1166 Avonmouth to Hock Cliff

West Coast, River Severn

Severn Estuary – Survey operations

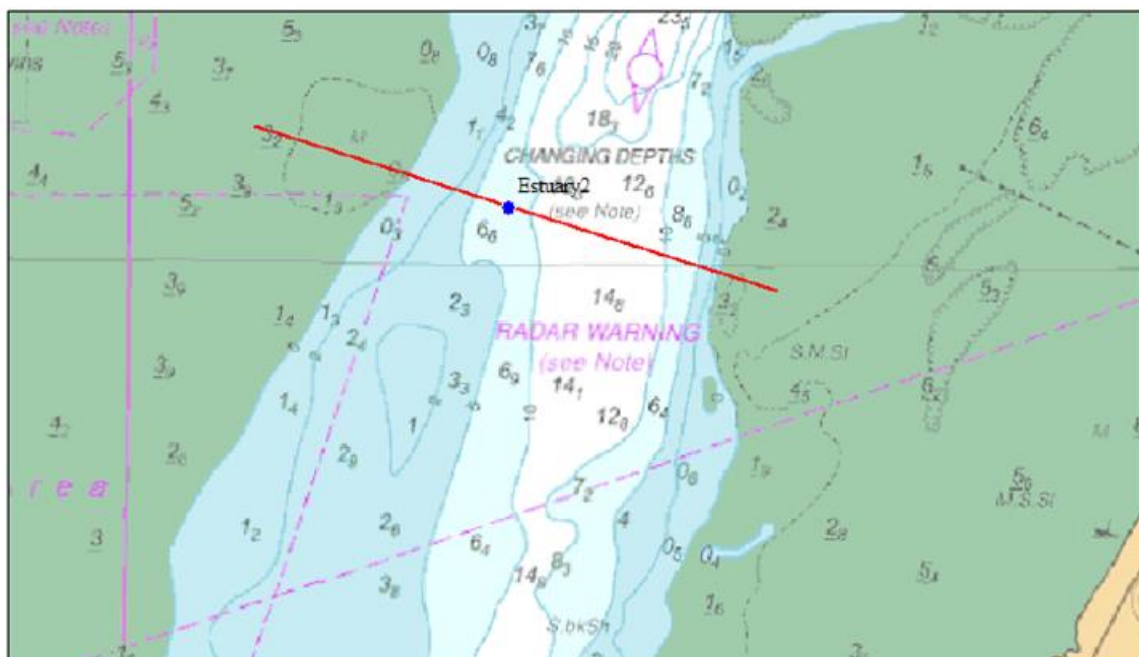
A transect survey is planned be conducted in the Shoots Channel downstream of the Prince of Wales Bridge during Thursday 02nd October.

The survey will be conducted from the vessel *Explorer* (Call sign 2WWE, MMSI 235008116). The vessel will be visible on AIS and will also be contactable on appropriate VHF working channels 13 & 16.

Operations along the transect are planned to take place between 0600 – 1800hrs. The survey vessel will progress along the transect at approximately hourly intervals and will give way to larger traffic operating in the navigation channel. Other vessels are requested to pass slowly and consider their wash.

Transect start: 51° 31.14563' N / 2° 58.10110' W

Transect end: 51° 29.69487' N / 2° 56.71164' W



Notices to Mariners may be viewed on the Trustees' website:

www.gloucesterharbourtrustees.org.uk

Owners, Agents and Charterers should ensure that the contents of this Notice are made known to the Masters or persons in charge of their vessels or craft.

S Henderson
Harbourmaster

01st October 2025