

LOCAL NOTICE TO MARINERS No. 12 OF 2025 (Amendment 2)

Hinkley Point C Marine Works

HINGLEY POINT TEMPERATURE LOGGER REDEPLOYMENT AND SEDIMENT SAMPLING AT STERT AND BERROW FLATS USING A HOVERCRAFT

New dates: 08th – 12th September 2025 (1-day Survey)

Issued: 02/09/2025

The work is part of the Cefas Hinkley Point C mudflat monitoring programme, designed to characterise temperature fluctuations in Bridgwater Bay.

The work will be delivered by Marine Science Support (MSS). The field team will comprise of two staff members from MSS and one Ocean Ecology Limited (OEL) staff member on board the hovercraft. Weather/serviceability permitting, the hovercraft will operate on 27 August 2025.

A total of 5 Low Shore sampling locations will be visited to allow MSS personnel to access long-term monitoring stakes. The relevant data will be captured at each location and the monitoring stakes checked and redeployed. This survey is carried out four times a year in February, May, August and November over spring tides. At each site MSS staff will replace a monitoring stake and take relevant meta data.

In addition to the monitoring stake replacement CEFAS require the collection of the bivalve *Macoma balthica* at each station during the surveys in February and August. This will require sieving significant quantities of mud in situ before identifying, picking out, and enumerating the animals.

Intertidal survey work will be conducted onboard one of OEL's dedicated hovercrafts, MACV *Solea* or *Redshank* operating out of Burnham on Sea. Communications on marine VHF Ch 08 / 16.

Public interface

The works will be undertaken outside the boundary of Hinkley Point C construction site. The survey team will be using public rights of way and the hovercraft to access the different sampling locations.

Site	Access/Egress	Nearest postcode
Burnham-on-Sea	Hovercraft launching from Burnham-on-Sea (entry to field site from low shore of Stert flats)	TA8 1BT
Berrow Sands (North)	This section of beach is found midway between Brean and Berrow South. Public car access from the Coast Rd. Public parking on beach.	TA8 2RA



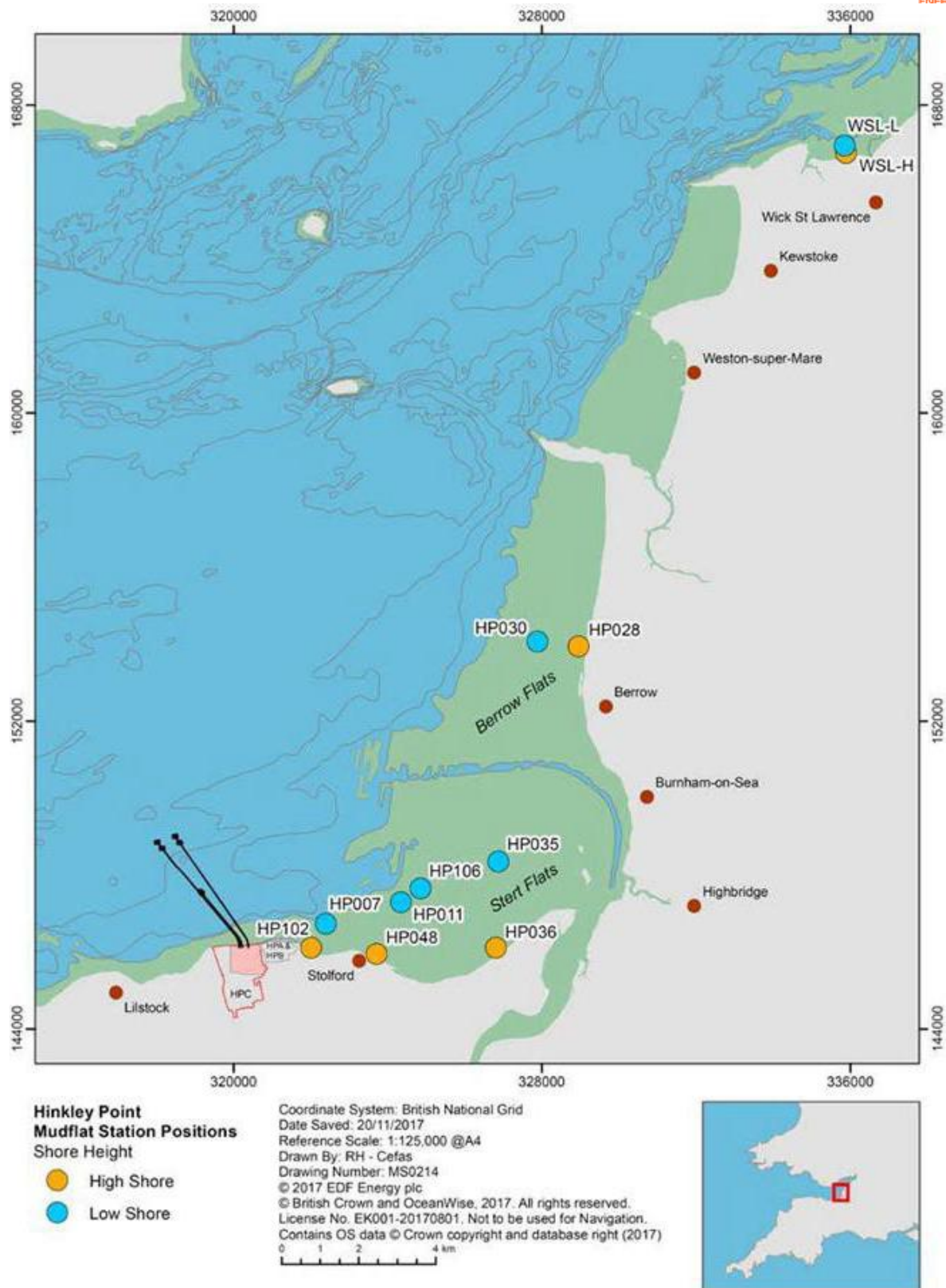


Figure 1: Sampling sites in Bridgwater Bay. Low shore stations are accessed by hovercraft and denote where temperature loggers are placed; marked by blue circles above.

This local notice to mariners is self-cancelling
Harbour Master – Hinkley Point C Harbour Authority